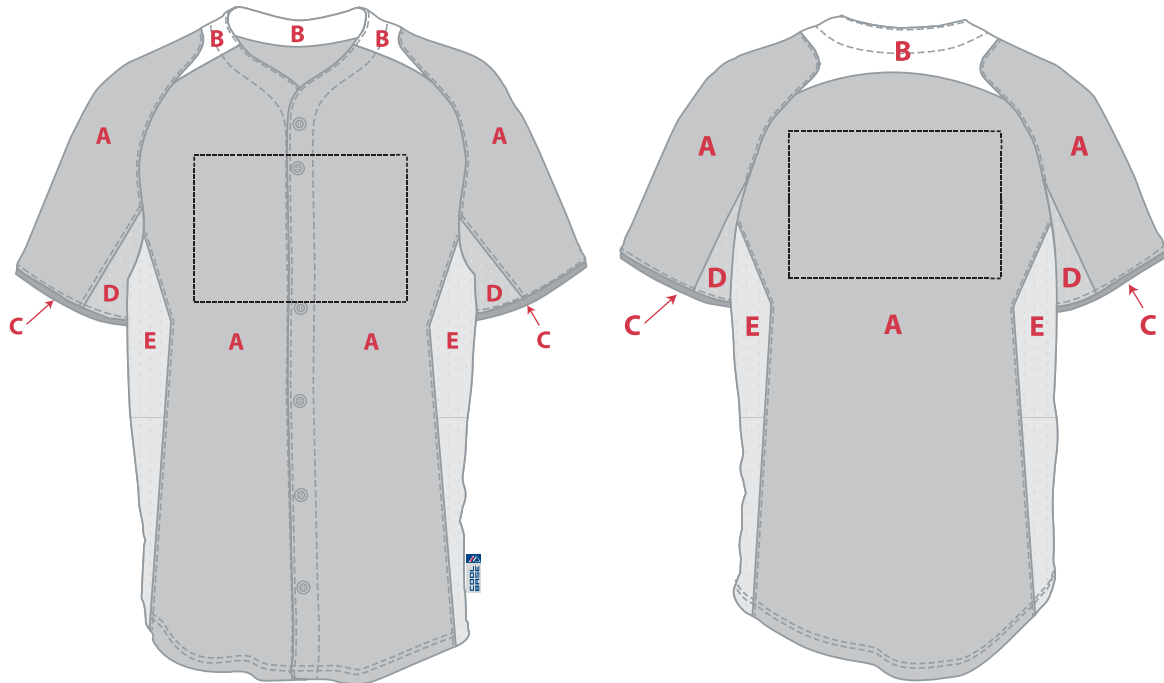




DESIGN A YOUNIFORM CONTEST

Below are some guidelines to follow as you approach your Design a YOUniform Contest Entry.



- All panels with matching letters above must be the same solid color throughout.
For example, if panel "A" on the front left of the jersey is navy blue, then all panels labeled with "A" must also be navy blue.
- The dashed boxes above indicate the approximate locations where you should design a logo (front) and name/number (back).
- Cap needs to have the New Era logo on the side. Size and location must remain as they are on the template. Can be any color.
- Cap needs to have the MLB Batter logo on the cap. Size and location must remain as they are on the template. Batter must remain white, but outer portions can be any color.
- Cap/Jersey: If any part of any Brewers logo is used (not the full logo), that same logo needs to be used in its entirety in a nearby location.
*For example, if you use part of the ball & glove logo on the left side, the full ball & glove logo also needs to be on the left side.
The full logo can be small but must be present.*
- Cap/Jersey: If any of the Mascot names are used, the characters need to also be present in a nearby location.
- Cap/Jersey: If using the "Brewers" name, it needs to be in a different font than any other text within your design.
- Cap/Jersey: Fabric needs to be a solid color and cannot be a burnout fabric or patterned fabric.
- Cap/Jersey: Cannot have an image of a baseball by itself on any part of the design.
- No profanity.
- We reserve the right to make modest color/design modifications in order to match MLB guidelines.

